



**Charles M. Willie & Co (Shipping) Ltd**

*Celtic House*

*6 Ocean Way, CARDIFF CF24 5HG*

*Phone +44 2920 471000*

*Fax +44 2920 475799*



## **m.v. CELTIC FORESTER**

Built 2003  
Yard Royal Bodewes, Holland  
Flag British  
Homeport Cardiff  
IMO Number 9256171  
Official Number 924124  
Call Sign MEWG2

GT 2983 tons  
NT 1646 tons  
Displacement 5700 tons  
DWAT Summer 4323 tons  
DWCC Summer 4100 tons  
DWCC Winter 4000 tons  
Grain/Bale abt. 213,000 cbft

Main engine MAK 6M25  
Max output 1800 kW  
Shaft Generator Yes  
Generators 2 of 140kW  
Bow thruster 300 kW  
Speed 11 knots BF 2  
Consumption - sea 6 tons HFO per day  
Consumption - port 0.4 tons gasoil per day

Ballast 1996 m3  
Fuel - HFO 209 m3  
Fuel - Gasoil 39 m3  
Fresh water 60 m3

Class society DNV-GL  
Class notation + 1A General Cargho Ship Ice 1B  
Hull & Machinery London syndicates  
P & I Lodestar

LOA 89.98 m  
Beam 15.20 m  
Depth 6.60 m  
Max summer draft 5.10 m  
Max winter draft 4.996 m  
Draft in ballast 3.4 m  
Airdraft in ballast 22.8 m masts up 13.6 m masts down

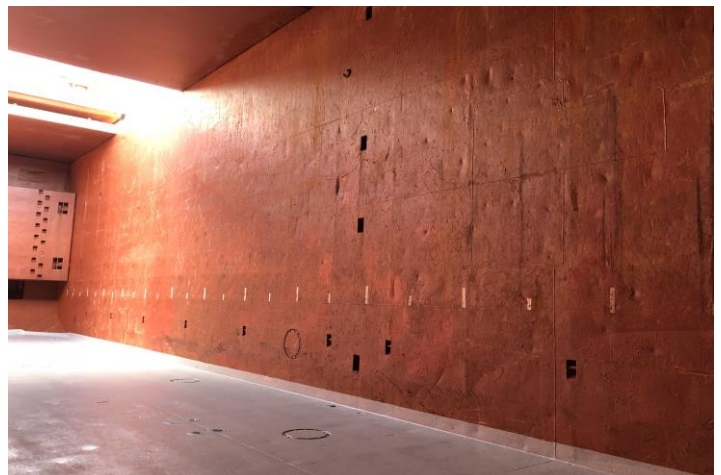
Hold/Hatch One with a strongbeam  
Max hatch loading 1.6 tons per m2  
Hatch dimensions 61.50 m by 12.60 m  
Hold dimensions 61.50 m by 12.60 m by 7.99 m (h)  
Hold narrows forward over last 8.1 metres to 8 m  
Hatch type Roden Staal closed pontoon system  
Bulkheads Two @ max three compartments  
Bulkhead positions  
Max tanktop loading 15 tons per m2

Height waterline to coaming in ballast 5.66 m  
Height waterline to coaming laden 4.0 m

Dangerous goods fitted  
Grain Fitted  
Heavy cargo fitted  
El Vent



Hold looking forward  
Showing narrowing over 8.1 m to 8 m



Hold looking aft  
Showing bulkhead stowing positions