



Charles M. Willie & Co (Shipping) Ltd

Celtic House

6 Ocean Way, CARDIFF CF24 5HG

Phone +44 2920 471000

Fax +44 2920 475799



m.v. CELTIC NAVIGATOR

Built 2003
 Yard Royal Bodewes, Holland
 Flag British
 Homeport Cardiff
 IMO Number 9256169
 Official Number 923965
 Call Sign MEVN9

GT 2954 tons
 NT 1646 tons
 Displacement 5713 tons
 DWAT Summer 4280 tons
 DWCC Summer 4100 tons
 DWCC Winter 4000 tons
 Grain/Bale abt. 213,000 cbft

Main engine MAK 6M25
 Max output 1800 kW
 Shaft Generator Yes
 Generators 2 of 140kW
 Bow thruster 300 kW
 Speed 11 knots BF 2
 Consumption - sea 6 tons HFO per day
 Consumption - port 0.4 tons gasoil per day

Ballast 1996 m3
 Fuel - HFO 208 m3
 Fuel - Gasoil 35.7 m3
 Fresh water 60 m3

Class society DNV-GL
 Class notation + 1A General Cargho Ship Ice 1B
 Hull & Machinery London syndicates
 P & I Lodestar

LOA 89.98 m
 Beam 15.20 m
 Depth 6.60 m
 Max summer draft 5.10 m
 Max winter draft 4.996 m
 Draft in ballast 3.4 m
 Airdraft in ballast 20.44 m masts up 8.94 m masts down

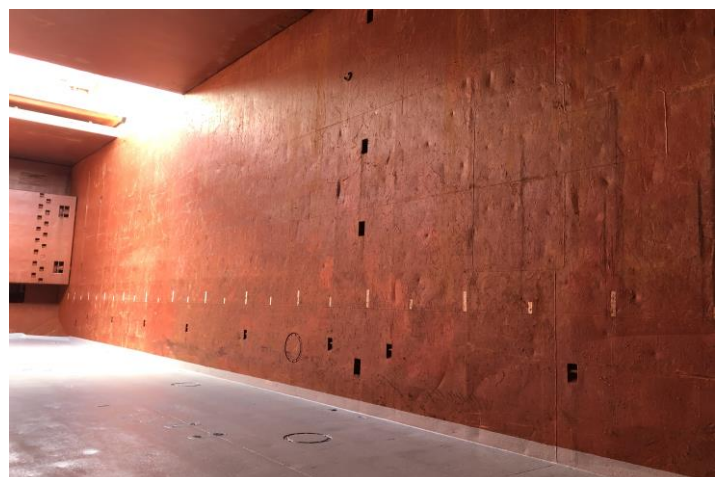
Hold/Hatch One with a strongbeam
 Max hatch loading 1.6 tons per m2
 Hatch dimensions 61.50 m by 12.60 m
 Hold dimensions 61.50 m by 12.60 m by 7.99 m (h)
 Hold narrows forward over last 8.1 metres to 8 m
 Hatch type Roden Staal closed pontoon system
 Bulkheads Two @ max three compartments
 Bulkhead positions
 Max tanktop loading 15 tons per m2

Height waterline to coaming in ballast 5.66 m
 Height waterline to coaming laden 4.0 m

Dangerous goods fitted
 Grain Fitted
 Heavy cargo fitted
 El Vent



Hold looking forward
 Showing narrowing over 8.1 m to 8 m



Hold looking aft
 Showing bulkhead stowing positions